

## RhoA

**Catalog Number:** 10104

**Synonyms:** Ras homolog gene family, member A, ARHA, ARH12, RHO12, RHOH12

**Background:** Small GTPases are a super-family of cellular signaling regulators. RhoA belongs to the Rho sub-family of GTPases. Rho proteins play critical roles in many actin cytoskeleton-dependent processes including platelet aggregation, cell motility, contraction, and cytokinesis. It regulates the formation of stress fibers and focal adhesions in fibroblasts and Ca<sup>2+</sup> sensitivity of smooth muscle contraction.

### Amino Acid Sequence (1-193)

MAAIRKKLVIVGDGACGKTCLLIVFSKDQFPEVYV  
PTVFENYVADIEVDGKQVELALWDTAGQEDYDRL  
RPLSYPTDVL MCFSIDSPDSLENIPEKWTPEVKH  
FCPNVPIILVGNKKDLRND EHTRRELAKMKQEPVK  
PEEGRDMANRIGAFGYMECSAKTKDGVREVFEM  
ATRAALQARRGKKKSGCLVL

**Source:** Human, recombinant full length, His<sub>6</sub>-tag

**Expression Host:** E. coli

**Molecular Weight:** 22 kDa

**Purity:** >99 % by SDS-PAGE

**Constituents:** 20 mM Tris-HCl, pH 8.0, 150 mM NaCl.

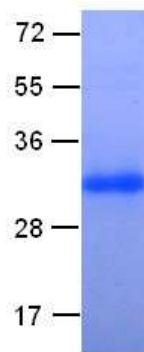
**Physical Appearance:** White or clear

**Concentration:** 1 mg/mL

**Storage:** -80°C

### Preparation Instructions

Adding of 10 mM  $\beta$ -mercaptoethanol or 1 mM DTT into the solution to protect the protein is recommended and using of non-ionic detergents such as n-Dodecyl  $\beta$ -D-maltoside (DoDM) or polyethylene detergents (e.g. C<sub>12</sub>E<sub>10</sub>) also help to stabilize the protein. Avoid repeated freezing and thawing.



The purity of His-tagged RhoA was determined by SDS-PAGE and Coomassie Brilliant Blue Staining.

### References

1. Canman, J. C. et al., Science 322: 1543-1546, 2008.
2. Guilluy, C. et al., Nature Med. 16: 183-190, 2010.
3. Machacek, M. et al., Nature 461: 99-103, 2009
4. Nakamura, M. et al., Invest. Ophthalmol. Vis. Sci. 42: 941-947, 2001.
5. Rao, P. V. et al., Invest. Ophthalmol. Vis. Sci. 42: 1029-1037, 2001.
6. Valderrama, F. et al., Science 311: 377-381, 2006.
7. Wang, H.-R. et al., Science 302: 1775-1779, 2003.
8. Wu, K. Y. et al., Nature 436: 1020-1024, 2005.
9. Yoshida, S. et al., Science 313: 108-111, 2006.

FOR RESEARCH USE ONLY. NOT FOR DIAGNOSTIC APPLICATIONS